



阿 姆 斯 壯

idea | reality

[Between us, ideas become reality.™]

你 我 共 创 理 想 天 地

地 材
COMMERCIAL

系 列
FLOORING



阿 姆 斯 壯

[Between us, ideas
become reality.™]

理想 | 实现

www.armstrong.cn

Colour is the only expression of wealth
色彩是财富的唯一表达方式

— Friedensreich Hundertwasser



အမေရိကန်

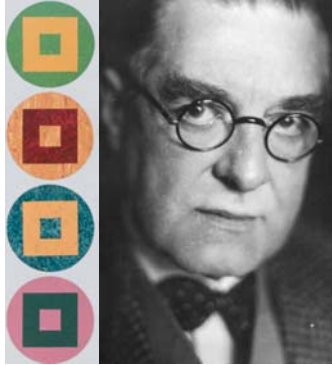
Colour

Today, colour has major significance in both living and working environments. Actual colour no longer necessarily reflects the nature of the construction material. It is purely the result of design.

A new chromatic interpretation of reality, linked to the use of scientifically advanced tools and techniques, has led to the definition of new colour 'families' and combinations. These have removed traditional boundaries to enable new applications and new areas of use.

Armstrong & History of Design

阿姆斯壮与设计历史



1905

Peter Behrens

Peter Behrens, teacher of Walter Gropius and Mies Van der Rohde, developed his famous pattern "Circle & Square".

In 1917, architect Gabriel von Seidl used this famous pattern in new Town Hall in Bremen, Germany. In mid of 90s, Armstrong re-installed this classic pattern in the original place.

Peter Behrens 为著名建筑师 Walter Gropius 和 Mies Van der Rohde 的老师，他设计了经典的“天圆地方”图案。1917年，建筑师 Gabriel von Seidl 在德国布莱梅市镇厅采用了这图案。于90年代中期，阿姆斯壮将这失传的图案重新安装在市镇厅。

1926



Walter Gropius

The preferred architectural style in Europe is still the modernism. Walter Gropius as the founder and director of the Bauhaus in Germany.

The flooring material selected Armstrong Linoleum.

鲍豪斯为欧洲现代派建筑的摇篮，Walter Gropius 为鲍豪斯的第一任校长。其建筑物的地板采用了阿姆斯壮亚麻。

1929



Mies van der Rohe

Mies van der Rohe was the last director of Bauhaus. One of his spectacular buildings was the German Pavilion at the Expo Barcelona, Spain in 1929. The flooring material selected Armstrong Linoleum.



Mies van der Rohe 为鲍豪斯最后一任校长。他的其中一个令人惊叹的作品为建于 1929 年，巴塞罗娜博览馆的德国展览馆，馆里采用了阿姆斯壮亚麻地材。



1957

Le Corbusier

The Hansa City, which was almost completely destroyed in World War II. In 1957, Le Corbusier designed the high-rise apartment block at the Helisberger intersection. 35,000m² of Armstrong cork linoleum were used in these buildings.

1957 年，为了重建几乎完全摧毁于二战的汉萨市，Le Corbusier 在海斯堡设计了高层公寓房，并在其中用了 35,000 平米的阿姆斯壮亚麻地材。

Armstrong & History of Design

阿姆斯壮与设计历史

1992



Jean Nouvel

Jean Nouvel is one of France's leading architects. His buildings represent unlimited individualism that always integrates the latest technologies. The Hotel Les Thermes in Dax: functional, ecologically orientated, with an unusual facade design. The perfect flooring: Uni Walton from Armstrong in custom colour "Blue".

1992 年，Jean Nouvel，法国建筑界的领袖人物之一，他的作品风格是属于奔放的个人主义，并结合最新的科技成果。Les Thermes 宾馆就是他的作品之一，使用完美的阿姆斯壮蓝色亚麻地板。



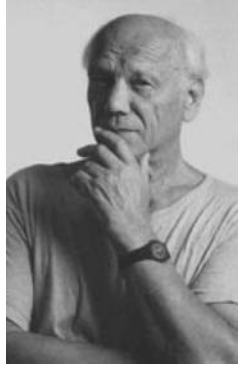
1997

Gail Bolland

For the extension to the General Infirmary, Leeds Hospital - Great Britain, the designer Gail Bolland came up with a particularly harmonious environment to the benefit of both patients and visitors. On each floor, on leaving the lift, you are greeted by imaginative in-laid designs made of Armstrong linoleum. The magnificently coloured roses, sun and rotundas correspond to glass paintings on the ceiling.

1997 年，设计师 Gail Bolland 设计的英国 Leeds 综合医院扩建部分，在每层楼面上，一走出电梯便可看见阿姆斯壮亚麻设计拼装而成的圆形图案，配合天花板上的圆形玻璃画，或成玫瑰或似太阳，其独特的设计给病人及探访者带来极大的视觉享受。

2004



Henning Larsen

For the new Copenhagen Opera House, Henning Larsen creates a separate island that is linked to the quay in the harbour district of Holmen Via a plaza, forms the building's crystallisation point. Henning Larson chooses Armstrong linoleum for the building.

2004 年，Henning Larsen 在和港口码头分离的岛上设计了哥本哈根歌剧院，并选择了阿姆斯壮亚麻地板。



2006

Leoh Ming Pei

In 2006, A famous first-class Chinese-American architect, Leoh Ming Pei designed the new Suzhou Museum. It would be his last piece of work. The museum complement both the artifacts Suzhou itself with its traditionally inspired yet contemporary architecture. The hall used Armstrong Linoleum flooring.

2006 年建成的中国苏州博物馆新馆是世界著名建筑大师贝聿铭的“封刀之作”，生动体现了苏州传统建筑风格与现代建筑手法的结合，馆内地面采用了阿姆斯壮亚麻地材。



About Armstrong

Armstrong World Industries, Inc had been founded in 1860 at Lancaster, PA, U.S. Armstrong is a global leader in the design and manufacture of floors.

Through its portfolio of commercial and residential flooring products, Armstrong offers almost unlimited options for all parts of buildings. This range includes Linoleum, Vinyl Sheet and Tile, Luxury Vinyl Tile, Engineered Wood Floor, Laminate Wood floor, Specialty Floor; Flooring Installation and Maintenance products.

For Armstrong, this publication represents an idea of design as an intrinsic part of life and work. An investment in design seen as both practice and cultural discipline. Viewing design not as a kind of ethical and psychological contribution to society, but as an essential value which should always be inherent in even the most practical of working tools.

A company operating in the field of construction materials needs to pay close attention to changing lifestyles and the evolution of cultural and aesthetic attitudes. Equally, the company with a high level of technical expertise cannot afford to ignore scientific debate.

Such a company must know how to interpret, and participate in, the complex thread that connects the visual and spatial arts to the world of industrial and commercial applications. It must be creative, dynamic and flexible in its response.



阿姆斯壮简介

阿姆斯壮世界工业有限公司，成立于 1860 年，总部位于美国宾夕法尼亚州。阿姆斯壮是一家提供地材设计及制造的全球领先企业。

通过提供商用及家用地材系列，阿姆斯壮能为建筑物的各个空间提供丰富的创意选择，包括弹性卷材及片材，高级弹性片材，实木复合地板，强化复合地板，特殊功能地板以及地材安装及保养系列。

对于阿姆斯壮，此设计手册代表了在生活中和工作中的设计灵感。设计能贯穿我们的实践生活和文化领域，而每一项设计不单只作为民族或社会心理上的一种表达，更是一项重要的在基础价值延伸的实际工具。

一家建筑材料公司必须留意生活方式的改变及文化和建筑美学的发展。同样的，一家高技术研发公司不能忽略科学辩证理论。

公司也必须清楚如何去说明，怎样在视觉与空间表达上为工业和商用环境提供产品应用，必须要学会创新，变革以及灵活运用。

Partnership and development

合作伙伴和发展

This publication includes a range of the many design themes Armstrong has been called upon to interpret in recent years.

Over more than a century of activity, Armstrong has always operated in partnership with design professionals and architects fostering a close working relationship with project design teams.

In response to changing times, this relationship has developed different forms and modes, but has always been full of stimuli and new directions. These have formed the basis of the company's most advanced systems and products.

Armstrong makes its technical know how and international experience available to designers, with the aim of contributing to the creation of significant and lasting works of architecture.

We are proud that Armstrong products form an integral component within many buildings for industry, for institutions, for housing and for the workplace.

This commitment has contributed to the creation and production of the new Armstrong product ranges.

此本设计手册包含了阿姆斯壮近些年来所创意的设计主题和设计说明。

在一个多世纪的时间里，阿姆斯壮一直致力于设计师和建筑师的合作，希望借此促进与项目设计团队更为紧密的工作关系。

在不同时期，这种合作的关系会发展成不同的形式和方式，但总是充满激情并产生新方向。这些元素成就了公司最先进的系统和产品。

阿姆斯壮利用它的技术知识和国际经验与设计师分享，并为建筑的可持续发展提供更为上佳的创作。

我们自豪于阿姆斯壮的产品已被广泛应用于不同行业，不同机关，住所以及工作场合。

这个承诺让新的阿姆斯壮产品系列更有创意和生产力。

The design process

设计过程

The new products are based on:

Wide-ranging iconographic research into the evolution of trends in the fields of architecture, interiors, product design, fashion, graphics and communication.

Creation of a specific color bank for Armstrong products. This is a reference tool for use during the various phases of design to achieve the optimum chromatic coordination within Linoleum and vinyl products.

新产品基于：

通过广泛的研究，数据应用在建筑学、室内设计、产品设计、时装、图案和通讯领域。

丰富的色彩创作是阿姆斯壮产品的一大特点。阿姆斯壮亚麻和PVC地板系列便能应用在各个不同的设计阶段。

The new collections 新产品系列

The Linoleum Collection concept

To create a 'look' to carry linoleum into the future, in keeping with the intrinsic qualities of this environmentally-friendly materials.

The new designs are totally original and represent a break with the traditional image of linoleum. Colors are coordinated across the range.



亚麻地材系列

亚麻保持一贯的环保材质，亦创造‘视觉’将亚麻引进未来。

新设计是完全原创和代表亚麻的传统形象。整个颜色系列可互相协调。

The Wetroom Collection concept

The Wetroom collection is a complete wall & floor covering system for wet areas. Made from high quality vinyl it is very flexible and quick and easy to install, and with fewer joints than conventional wall coverings a watertight surface is assured.

- HYGIENIC
- WATER TIGHT
- EASY TO INSTALL
- DESIGN ORIENTATED



潮湿环境系列

潮湿环境系列是一个为潮湿区域提供完善的墙面和地面系统。由高品质的PVC制成，弹性极佳并容易安装，无任何缝隙，为墙面和地面一体化的防水系统。

- 卫生
- 防水
- 容易安装
- 设计感



idea

reality

Ventura

Customer Service Management Call Centre

Dearne Valley, Great Britain
Ventura 客户服务中心，英国

Segment / 领域: Office / 办公楼

Project by / 设计事务所: Hattrell & Partners

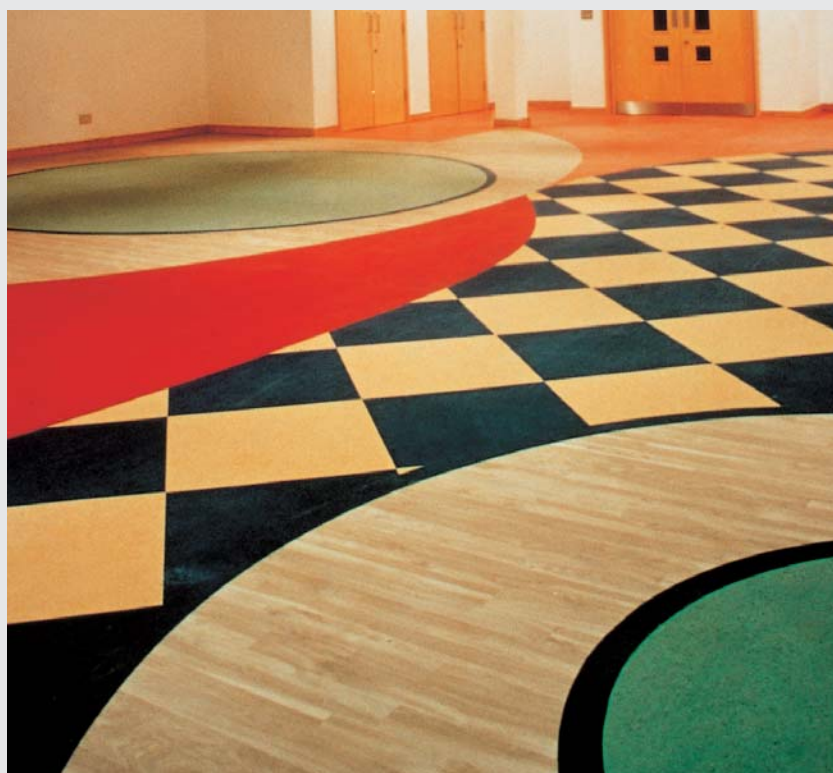
Year / 年份: 2000 年

Surface / 面积: 1,800m² 平米

Product / 产品: Linoleum, Marmorette / 美莱亚麻

Making large areas varied, dynamic and attractive with colours - aesthetic considerations played a decisive role in the decision of Ventura Customer Service Management in Britain to opt for linoleum from Armstrong. The wide range of colours in the Marmorette collection leaves nothing to be desired. The laser controlled cutting of the linoleum sheets and the accurate fitting earned the "Installation of the Year 2000" award from the British journal, the "Contract Flooring Journal".

使大面积的地面显得多样化，动感并富于色彩的吸引力——美观的考虑在 Ventura 客户服务中心的地材选择中占有重要地位。阿姆斯壮生产的亚麻地材因其具有丰富多彩的颜色，富于变化的应用性深得 Ventura 客户服务中心业主的垂青。同年阿姆斯壮还凭借其特有的激光调控切割工艺技术获得了英国地材专业杂志“Contract Flooring Journal”的“2000 年度安装施工方法大奖”。





Be Line

Moscow, Russia

Be Line, 莫斯科, 俄罗斯

Segment / 领域: Office / 办公楼

Project by / 设计事务所: Vladimir Lifatov

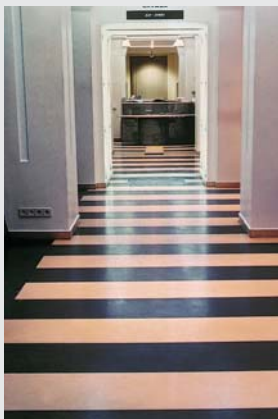
Year / 年份: 1998 年

Surface / 面积: 700m² 平米

Product / 产品: Linoleum, Marmorette / 美莱亚麻

Sophisticated design which can also cope with the biggest crowd of visitors: before the telephone company "Be Line" - the number 1 in Russia - opened its centre in Moscow, the owner was convinced of the benefits of a Armstrong linoleum floor. Inlays with geometric patterns achieve different room effects in the interior. The Marmorette collection from Armstrong with its numerous colours also offers a great deal of creative scope for colour designs.

精道的设计也可以用于处理人流量大的场合，比如象 Be-Line 这家在俄罗斯排名第一的电话公司，它在莫斯科新开的服务中心，业主就确信阿姆斯壮亚麻能带给他们所需要的优点，几何图形拼花可以为不同的房间带来不同的视觉效果。阿姆斯壮的美莱亚麻正因为具备了众多的色彩从而赢得了设计师的青睐并创造了深受业主满意的出彩设计。



Crea Audio Vision

Ganderkesee, Deutschland

Crea 视频制作公司, 德国

Segment / 领域: Office / 办公楼

Project by / 设计师: Hans Munch, Harald Meierdierks

Year / 年份: 1999 年

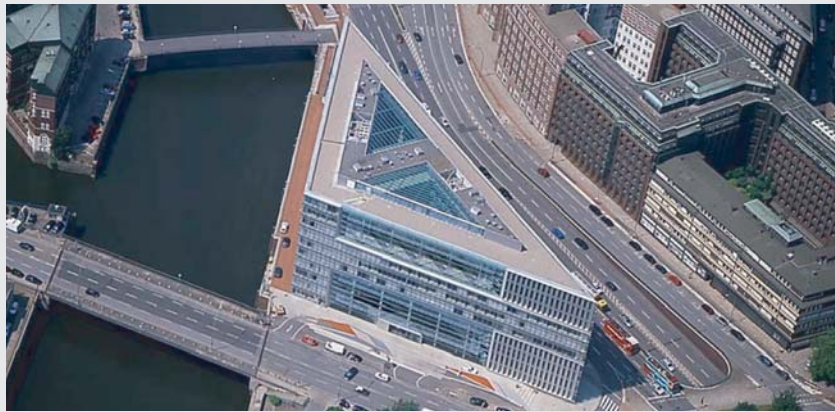
Surface / 面积: 500m² 平米

Product / 产品: Linoleum, Marmorette, Uni Walton, Linorette / 美莱亚麻, Uni Walton, 丽瑞亚麻

With the creARTrium, which is unusual from all points of view - Hans Munch, owner of the company CREA Audiovision, fulfilled the dream of his life: to draw the daily impetus for creative work from inspired architecture. His high tech media company building in Bremen is a work of art in itself. The coloured linoleum floor coverings are integral components of the interior architecture, which is aesthetically designed throughout. Integrated like mosaics in the linoleum floor, there are pictures and symbols everywhere in the studios, offices and corridors symbolising the elements and the inlays reflect the desired multi-cultural image.

CreARTrium 从各方面来看都是一个不寻常的建筑。Hans Munch, CREA 视频制作公司所有人, 在这幢建筑物中实现其一生梦想: 在富于创意的建筑中汲取其每天工作所需的灵感, 他在不莱梅的高科技媒体公司, 本身就是一件艺术品, 色彩丰富的亚麻地板是建筑整体设计的组成元素, 各种拼花组成的图案和符号充斥于工作室、办公室和走廊。





Deichtor Center

Hamburg, Deutschland
Deichtor 中心, 汉堡, 德国

Segment / 领域: Office / 办公楼

Project by / 设计事务所: BRT Architects

Year / 年份: 2000 年

Product / 产品: Transparency

The Deichtor Center was selected as the European Office of the year 2000. As the important job of Hadi Teherani, the whole office design fulfilled with the idea 'Transparent'. Including the usage of buffer area, day lighting of the whole building and transparent sanded acrylic front desk are all present the same style. Designed by Hadi Teherani himself and manufactured by Armstrong, The floor 'Transparency' has a semi-transparent and water wave effect. When the people stand on it, it will have the feeling as standing on the still water. With this floor design Armstrong has won 4 design awards.

Deichtor 中心获得 2000 年欧洲办公楼设计大奖。作为 Hadi Teherani 的得意之作, Hadi 在整个设计中贯穿了 '通透' 的设计理念。因此在内部缓冲空间的运用, 大楼的采光效果, 以及采用半透明磨砂亚克力材料制成的前台, 无不体现着一风格。由 Hadi Teherani 自己设计, 阿姆斯壮负责制造的 'Transparency' 地板有半透明的水纹效果。当人们站在上面会有一种站立于平静水面的错觉。此款地板的设计也帮助阿姆斯壮赢得了 4 项设计大奖。

To understand our architecture requires a grasp of the connecting element...



Hadi Teherani

idea





reality

Gainsborough Adventure Playground

Gainsborough, Great Britain
Gainsborough 探险家乐园，英国

Segment / 领域: Education / 教育

Project by / 设计师: Alison Davies

Year / 年份: 1999 年

Surface / 面积: 1000 m² 平米

Product / 产品: Linoleum, Colorette, Marmorette /
Colorette, 美莱亚麻

A colourful floorcovering suitable for children was to be chosen for the adventure playground in Gainsborough in England.

When planning the day facility for children from 5 to 14 years old, the architects sought advice from the children themselves.

Between them, they selected lively and convivial colours from the Armstrong linoleum collection Marmorette and Colorette, and designed patterns which bring nature into the building: the sky, the sea, meadows and fields, flowers and sunrises - all rooms have their own themes, full of fun and cheerfulness.

在英格兰的 Gainsborough, 有一个学校其间有一所地面搭配很多新奇冒险图案的运动场, 当初设计师在描绘这些图案的时候, 征询了很多 5 - 14 岁小孩子的意见, 孩子们总爱用那些色彩丰富的亮丽颜色去装扮地面, 而阿姆斯壮的亚麻地材正好能符合这些孩子们对于色彩的渴望, 用这些颜色丰富的亚麻地材孩子们拼出了天空, 海洋, 麦田, 花朵和日出。所有的房间都有各自的主题, 每个房间都充满了欢乐和开心的意味。



Frobel Seminariet University

Frederiksberg Denmark
Frobel Seminariet 大学，丹麦

Segment / 领域: Education / 教育

Project by / 设计师: Jorgen Stephensen

Year / 年份: 1999 年

Surface / 面积: 250m² 平米

Product / 产品: Linoleum, Marmorette / 美莱亚麻

An ecological floorcovering which fulfils the highest aesthetic demands and is also tough and hard wearing: for the renovation of the music room at the Frobel Seminariet University in the Frederiksberg area of Copenhagen the architect deliberately decided on linoleum. The vigorous blue of the Marmorette collection is broken by steel squares, and their vibrant sheets give a dynamic feeling to the room.

现代的地面材料不但需要达到生态要求，还要符合审美需要；材质需坚实耐磨。所以当建筑师决定在 Frobel Seminariet 大学建造一个革新的音乐教室时，首先想到亚麻，深邃的蓝色亚麻中嵌入金属方块，让环境一下子动态乍现，充满了活力的生机。



Heinz Galinski Schule

Berlin, Deutschland

Heinz Galinski Schule, 德国

Segment / 领域: Education / 教育

Project by / 设计师: Zvi Hecker

Year / 年份: 1997 年

Product / 产品: Linoleum, Colorette / Colorette 亚麻

Regular geometric shapes and vibrant features are the basic architectonic elements from which the buildings of the internationally renowned architect Zvi Hecker are formed. Hecker was awarded the German Critics' Prize for Architecture in 1996 for the design of the Heinz-Galinski School in Berlin. The floor plan which can be interrupted as a windmill. A windmill spreads out the design spirit. The Armstrong linoleum floor laid in the school building proves that the functionality of a floorcovering can certainly be compatible with very high aesthetic demands.

国际著名设计大师 Zvi Hecker 认为规则的几何图形和波浪是建筑的基本元素，Hecker 设计位于柏林的 HeinzGalinski 学校而获得 1996 年德国建筑师评委会大奖。从鸟瞰图可见，建筑物就像风车，它喻意在散布设计精神。而阿姆斯壮亚麻材料其功能性并充分表达设计师对美学的诉求与表达。



Zvi Hecker

"Architecture is an art in search of ever new expression of the human soul. It is a human art, but never human enough."



Before



After



Hundertwasser-Schule

Wittenberg, Deutschland

Hundertwasser-Schule, 德国

Segment / 领域: Education / 教育

Project by / 设计师: Friedensreich Hundertwasser

Year / 年份: 1999 年

Surface / 面积: 1000m² 平米

Product / 产品: Linoleum, Marmorette / 美莱亚麻

"Colour is only the visible expression of wealth and richness." Friedensreich Hundertwasser gave this motto literal expression when converting a school: Now colourful arches, bright tiles, ceramics and a golden dome decorate the former slab construction. Armstrong sponsored the conversion with coloured, environmentally friendly floor coverings made of linoleum.

“色彩是财富的唯一表达方式”，当Friedensreich先生接手这个学校改建项目的时候，他道出了他的设计理念。

这所建筑物拥有色彩丰富的拱形外饰，明亮的瓷砖贴面，金色圆顶装饰以及混凝土板层的构造，阿姆斯壮特意选用了同样色彩丰富并环保的地面铺设材料——亚麻。

"Colour is only the visible expression of wealth and richness."



Friedensreich Hundertwasser

Meisterhauser Dessau

Dessau, Deutschland

鲍豪斯设计院，德国

Segment / 领域: Education / 教育

Project by / 设计事务所: Lyonel Feininger

Year / 年份: 1999 年

Surface / 面积: 200m² 平米

Product / 产品: Linoleum, Uni Walton /

Uni Walton 亚麻

The restoration brought it to light in the rooms of the villa they own Paul Klee and Wassily Kandinski had deliberately in ignoring the cool Bauhaus aesthetics. The restorers discovered 170 different colour layers. The Armstrong linoleum floor was included by the two artists in the colour scheme for the rooms. It was partly restored and partly relaid in the old colours.

这幢建筑物的修复过程中业主故意的加进了鲍豪斯美学的特征，修复工人发觉了 170 个不同颜色的层次，阿姆斯壮亚麻地材被两位不同的设计师设计在了这幢老别墅中的每个房间里，还保留了部分原先建筑中的老颜色，形成了新旧统一的风格。



Every Color
is my favorite

Walter Gropius



Rainbow Bridge International School

Shanghai, China
虹桥国际学校，上海，中国

Segment / 领域: Education / 教育

Project by / 设计师: Gail Chen / 陈怡家

Year / 年份: 2006 年

Product / 产品: Excelon Terrazz / 魔石彩



Gail is the student of Hampton Roads Academy in Virginia, U.S.A. During 2006 summer holiday, Gail designed the flooring patterns for Rainbow Bridge International School. Her wish was to encourage the imagination and creativities in every child. She hoped the new building could provide the children a fun and happy learning environment. She chose to use Armstrong Terrazz because of its quality, and also because it is easy to cut and has a good selection of colors.

陈怡家就读于美国维吉尼亚州 Hampton 高校，于 2006 年夏天，为虹桥国际学校设计了地面图案。童真是设计的主题，希望能通过地板设计来提供孩子们一个充满想象力的探索空间，希望新的学校大楼能成为孩子们喜欢的学习环境。选用阿姆斯壮的魔石彩是因为其卓越的品质及丰富的色彩选择，在设计时可充份发挥想象力而不用局限于传统的几何图形与单一的颜色。





idea

|
reality
|

Leeds Hospital, General Infirmary

Leeds, Great Britain
Leeds 医院, 英国

Segment / 领域: Healthcare / 医疗

Project by / 设计师: Gail Bolland

Year / 年份: 1997 年

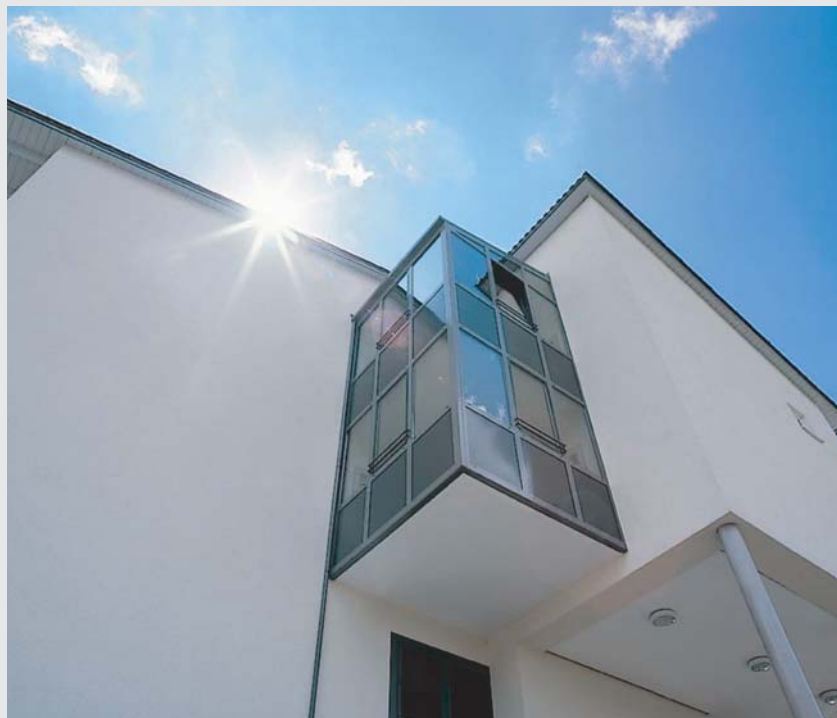
Surface / 面积: 20,000m² 平米

Product / 产品: Linoleum, Marmorette,
Colorette, Uni Walton, Linorette /
美莱亚麻, 丽瑞亚麻, Colorette, Uni Walton

An attractive environment encourages positive feelings, makes you relaxed and so supports the healing process. For the extension to the General Infirmary, completed in 1997, the designer Gail Bolland came up with a particularly harmonious environment to the benefit of both patients and visitors. On each floor, on leaving the lift, you are greeted by imaginative in-laid designs made of linoleum. The magnificently coloured roses, suns and rotundas correspond to glass paintings on the ceiling. Amusing animal designs in the children's area lead through the various departments.

在大型医疗机构中，如果能有一个令病患一走入就身心放松与愉悦的环境，那么肯定会给在其间接受康复治疗的病人有一定的促进作用。1997 年当设计师 Gail Bolland 接受这个医疗项目时就提出了一定要做个既独特又与环境相协调的医疗机构，在不同楼面，不同的电梯大堂，客人都能看到用亚麻地材所制作的充满想象力的拼花图案。有被设计成华丽的玫瑰，太阳以及与圆形玻璃天花造型相呼应的地面拼花。而在儿童病区则设计了充满童趣的小动物造型。





Altenheim Nagold

Nagold, Deutschland

Altenheim Nagold, 德国

Segment / 领域: Nursing Home / 养老院

Project by / 设计事务所: Heuser & Partner

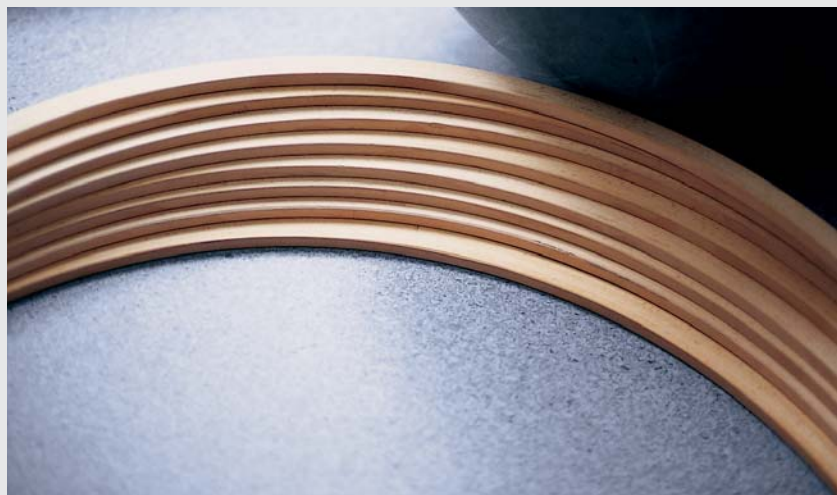
Year / 年份: 1999 年

Surface / 面积: 2,500m² 平米

Product / 产品: Homogen, Royal / 皇家龙

The new building of the "Gertrud-Teufel-Heim" is a model for the care of dependent people. Together with the management of the home, the architects developed a colour concept which is intended to help the residents to find their way around and at the same time to create an encouraging environment for activities. The bright colours on the walls of the corridors and day rooms go well with the light, neutral floors from the Armstrong Royal collection, which has also been installed in rooms of the residential care home.

Gertrud-Teufel-Heim 是养老院建筑的代表作，和养老院的管理者一起，设计师发展了一套色彩概念，以帮助老人在建筑中处行走而不至迷路，同时营造一种鼓励运动的气氛。走廊、房间墙上的鲜艳颜色和光线十分和谐，在整个地面上都采用阿姆斯壮皇家龙地板。



Monte dei Paschi

Siena, Italy
Monte dei Paschi 银行，意大利

Segment / 领域: Bank / 银行

Project by / 设计事务所: Augusto Mazzini

Year / 年份: 1994 年

Surface / 面积: 13,000m² 平米

Product / 产品: Linoleum, Colorette 亚麻

Banca Monte del Paschi di Siena - when the oldest bank in the world moved the areas of management and organisation into an ultra modern office complex, the functionality and flexibility of the premises played an important part. This requirement was also placed on the floorcovering, which was linoleum: the different colours separate the individual parts of the building and thereby help visitors find their way round. The new headquarter demonstrates modernness and transparency of the bank. The broad colour spectrum of the Armstrong Colorette collection seemed ideal for this task.

作为世界上历史最悠久的银行之一：Banca Monte del Paschi di Siena，当它将要乔迁到一个外表古旧而里面时尚的办公楼，如何体现建筑物内部的功能性和各区域之间的协调适应性是整个项目的重要部分。这个需求同样体现在地面材料的选择上，希望借助不同颜色亚麻的选用，能够让访客最快找到想去的地方。新总部展示了现代及透明感。这个项目充分体现了阿姆斯壮 Colorette 亚麻地材在色彩上的优势。





Novartis Bio Labor

Stein/Arrau, Switzerland
诺华生化工厂，瑞士



Segment / 领域: Plant / 工厂

Project by / 设计事务所: Wilhelm + Partner

Year / 年份: 1997 年

Surface / 面积: 8,000m² 平米

Product / 产品: Homogen, Royal Conductive / 皇家电子龙二

A pleasant working atmosphere in a high tech laboratory? That isn't a contradiction in terms for the homogeneous floor covering Royal. That's why the architects decided on the floor covering Armstrong Royal Conductive for the new building housing the Agrobiological Research Centre Biostein. Because it fulfilled the main requirement for floor coverings in laboratories and high tech companies. Because it immediately dissipates electrostatic charges. This floor covering proves that technical requirements and the demand for a totally attractive look are altogether compatible.

高科技的实验室也能带给人们愉悦的工作享受吗？用过皇家电子龙的地面就会告诉你这并不矛盾，在 Biostein 的农业生物研究中心就选择了阿姆斯壮皇家电子龙这一产品线。因为这是一款特别适用于实验机构和高科技公司的产品。它具有消散静电的功能，并且它能提供科技场所的应用需求，达到设计感的地面形象。



idea

|
reality
|

Expo Pavillons

Hannover, Deutschland
Pavillons 博览会, 汉诺威, 德国

Segment / 领域: Exhibition Construction / 展览建筑

Project by / 设计事务所: Diverse

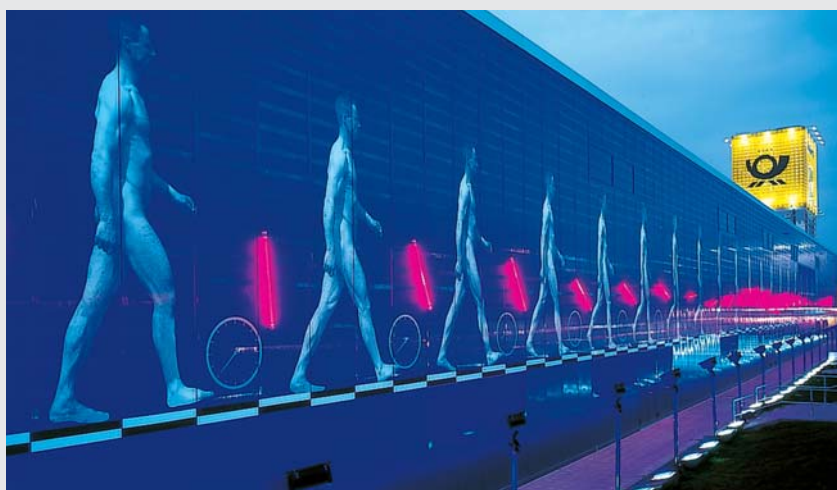
Year / 年份: 2000 年

Surface / 面积: 16,000m² 平米

Product / 产品: Linoleum, Marmorette,
Uni Walton / 美莱亚麻, Uni Walton

Round the world with Armstrong linoleum - no problem at Expo 2000, Whether in the Icelandic or the Swedish pavilion, whether on Burundi's stand or on Malta's, whether Liechtenstein or the United Arab Emirates: they all rely on this natural and robust floorcovering. And Armstrong linoleum also made a successful appearance in the theme park, on the Expo Plaza, in Planet M and in the EU pavilion.

在 2000 年世博会会场上你也可以看到阿姆斯壮亚麻地材的身影, 无论是在冰岛或瑞典搭建的户外帐篷馆, 还是布隆迪和马耳他展台, 还有列支敦士登或者阿拉伯联合酋长国, 他们都选用天然又环保的地面材料。同样阿姆斯壮亚麻也被铺设在了主题公园、展览会广场以及 M 天地和欧盟展馆内。





Rathaus Bremen

Bremen, Deutschland

布莱梅市政厅，德国

Segment / 领域: Town Hall / 市政厅

Project by / 设计事务所: Gabriel von Seidel

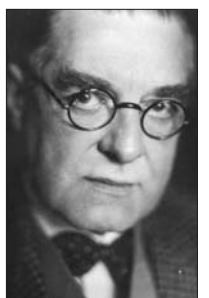
Year / 年份: 1999 年

Surface / 面积: 240m² 平米

Product / 产品: Linoleum, Uni Walton /
亚麻, Uni Walton

Art has triumphed in the end. When, in the seventies, carpet was thoughtlessly stuck over the yellow and black linoleum floor in the Neues Rathaus in Bremen, the original, designed by Peter Behrens, was irretrievably destroyed. Today a reproduction, true to the original, has been manufactured using the most modern ultrasonic technology in the Armstrong factory in Bietigheim, allowing the artistry and design from the heyday of linoleum to shine out again in its original lustre.

艺术终将获得胜利。70 年代，地毯被不加思索的铺在最初由 Peter Behrens 设计的不莱梅市政厅黄黑色亚麻地板上，造成其作品不可挽回的损坏。现在，完全忠于其原创的改造使用阿姆斯壮最先进的超声波技术完全复制了他设计的地板。使这件亚麻地面的设计杰作重放光彩。



Peter Behrens

Allianz Arena, Munich, Deutschland 安联中心, 慕尼黑, 德国

Segment / 领域: Lounge / 休息室

Project by / 设计事务所: Hild & K

Year / 年份: 2005 年

Product / 产品: Linoleum / 亚麻

Likely known from the football world championship in Germany 2006, the Allianz arena in Munich was designed by Architect Herzog & de Meuron, Switzerland. As you know the same office has designed as well the "Birds Nest" in Beijing for the Olympic Games. In the Lounge area, the office Hild & K design one lounge in the typical football style. The selected material: artificial grass for the wall, green color Armstrong linoleum for floor & the table. Drawers are integrated in the wall, covering beverages & food as well a TV flat screen. The drawers are outlined with white lines as a reference to the field marks.

2006 年世界杯在德国慕尼黑的安联中心举行, 安联中心由瑞士建筑所 Herzog & de Meuron 设计。它也是北京奥林匹克运动会场“鸟巢”的设计师。在休息室区域, Hild & K 设计一个典型的足球场样式的休息室。选择的材料有: 墙壁为人造草、而地板和桌面采用了绿色的阿姆斯壮亚麻地板。抽屉, 食品及平面电视都隐藏在墙壁内。而抽屉被白线描绘当作为球场上的标志。





Opera House

Copenhagen, Denmark
歌剧院, 哥本哈根, 丹麦

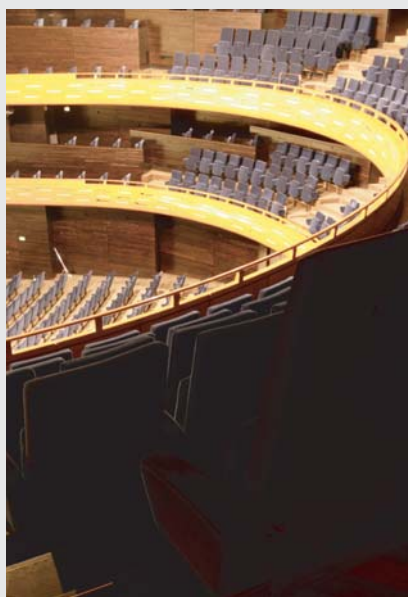
Segment / 领域: Opera House / 大剧院

Project by / 设计事务所: Henning Larson

Year / 年份: 2004 年

Product / 产品: Linoleum / 亚麻

The Opera is built on an artificial island that is linked to the quay in the harbor district of Holmen via a plaza. The large, free-floating roof over the four-storey, arc-shaped foyer, forms the building's crystallisation point. The interior design is reduced, White and black is enriched with selected colours as red. The whole Opera has covered with more than 20,000sm Armstrong black colour linoleum, which fit the classic atmosphere of the Opera. Linoleum with cork underneath is used in the concert hall (for acoustic reasons). Due to the orange color of the selected sandstone and its overall form the building is known by the locals as the pumpkin.



新哥本哈根大剧院建造在一个人造小岛上，可从购物中心连接到码头。四层楼高的巨大并可开启式屋顶和弧形大厅使它成为当地新的亮点。室内设计的用色十分精要，以少量精选的亮色如红色来烘托作为主色的黑白色。整个歌剧院采用了2万多平方的阿姆斯壮黑色亚麻地板，和歌剧院的庄重气氛十分相符。演奏厅里由于吸音的考虑，铺设了带有软木的亚麻地板保证了很好的音响效果。由于整个建筑物的外形选用了橙色的砂岩，它被当地人昵称为“南瓜”。

Europa Passage, Hamburg, Deutschland Europa Passage, 汉堡, 德国

Segment / 领域: Shopping Mall / 大型商场

Project by / 设计事务所: BRT Architects

Year / 年份: 2006 年

Product / 产品: Transparency

Europa Passage is the just built shipping mall of Hamburg. The 21 arcs is the key visual of this mall. As Hamburg is harbour & maritime city the arc shall also symbolized elements of ship construction. Armstrong Transparency is used as floor covering. After installed, the semi transparent water wave design of the floor under the blue light give the customer a feeling as standing on a still water, which also deliver the city features.

Europa Passage 是汉堡最近建成的大型购物中心。商场内的 21 个巨大拱形是这个购物中心的主要视觉元素。由于汉堡是一个港口及航海城市，这些拱形正是仿造了船的龙骨的造型。阿姆斯壮 Transparency 被用作了此商场的地板。安装完成后，地板的半透明水纹设计在蓝色的灯光下让使用者有一种站立在平静水面的感觉，也同时传递了城市特征，而成为该商场一大设计看点。





Suzhou Museum, China 苏州博物馆，中国

Segment / 领域: Museum / 博物馆

Project by / 设计师: Leoh Ming Pei / 贝聿铭

Year / 年份: 2006 年

Product / 产品: Linoleum / 亚麻地板



As last piece of work of Leoh Ming Pei, Suzhou Museum has combined the traditional Suzhou Garden element with modern architecture design. 'The white wall and dark roof' clearly deliver the message of Suzhou Gardens, at the same time the material used has typically modern taste. In consistent with the total design, designer has chosen Armstrong linoleum as the floor covering to show the modernism design. And the charcoal grey color also fits very well the total design.



作为贝聿铭的 '封刀之作', 苏州博物馆被认为是古典苏州园林和现代主义设计的经典。'粉墙黛瓦' 清晰的传递出古典苏州园林的设计风格, 而同时用材的选择则体现出典型的现代设计理念。和整体的设计理念相一致, 设计师选用了阿姆斯壮亚麻地板作为其地板材料之一, 展现了现代主义的设计思想, 而选用的巧克力灰色也很好的契合了整体的设计风格。



Leoh Ming Pei



idea



reality

Airport Reisemarkt Flughafen Frankfurt

Frankfurt, Deutschland
法兰克福机场, 德国

Segment / 领域: Airport / 机场

Project by / 设计事务所: Barbel Thorer

Year / 年份: 1998 年

Surface / 面积: 1,300m² 平米

Product / 产品: Linoleum, Linorette / 丽瑞亚麻

In holiday mood and wanting to travel: more and more often holidaymakers who are weary of their daily routines are booking the best weeks in the year at the last minute. The airport travel agency inside Frankfurt Airport has a large range on offer for people who can make up their minds quickly. In sand and blue tones, the wave shaped pattern on the Armstrong linoleum floor in the booking hall gives a foretaste of the pleasure of the beach and the sea. Here linoleum shows its strengths: freedom of design, excellent wearing qualities and ease of maintenance.

在一个充满度假气氛的环境中，旅客可以享受他们一年中最美丽的假期。在法兰克福机场内的大型机场旅行社中，用沙黄色和水蓝色调的亚麻地材拼出波浪形的图案，并且给旅客带来沙滩和海洋的感觉。这也体现了阿姆斯壮亚麻地材的优势。可随意自由设计，并且具有完美的质量、易维护和清洁的特点。





Sushi Bar Take

Moscow, Russia

寿司吧，莫斯科，俄罗斯

Segment / 领域: Restaurant / 餐厅

Project by / 设计事务所: Viadimir Lifatov

Year / 年份: 1998 年

Surface / 面积: 120m² 平米

Product / 产品: Linoleum, Marmorette / 美莱亚麻



The atmosphere of the Far East in the middle of Moscow. In the Sushi Bar Take not only can the guests enjoy the art of Japanese cooking, but also the stylish interior decoration with its Asiatic flair. The linoleum floorcovering is admirably suited to this designed environment. Because linoleum is also hard wearing and easy to clean, it is generally a very good choice as a floorcovering in hotels and restaurants.

在莫斯科中心内有一家具有远东风格的餐厅，在寿司吧里客人不但能享用美味的日式料理，还能享受到充满亚洲风格的室内装饰。而亚麻地材正能将这种装饰风格发挥到极致，同时它具有耐磨和易清洁的特点。这些特质也都是非常适用在酒店和餐厅环境里面。

Coffee Bar, Hannover, Deutschland 咖啡吧, 汉诺威, 德国

Segment / 领域: Retail store / 零售店

Project by / 设计师: Martin Despang

Year / 年份: 2004 年

Product / 产品: Armstrong Vinyl /
阿姆斯壮 PVC 地板

Martin Despang, Architect in Hannover designed 2004 the chain store coffee bar of a traditional and well known coffee bar. The key designing element is homogeneous vinyl sheet as color of coffee from Armstrong. The vinyl covers not only the floor, forms seats but also covers the front desk. In the upper level of the coffee bar the material selection is continued and forms as well part of the wall and the ceiling. Let the consumer completely immerse the tone of coffee.

Martin Despang, 这个汉诺威的设计师在 2004 年为一个著名的咖啡连锁店作了内装设计。主要的设计元素是阿姆斯壮咖啡色的同质透心 PVC 地板。这个地材不仅仅覆盖了地板, 同时还覆盖了椅子和前台。甚至还包括一部分墙面和天花板。让消费者完全沉浸于咖啡的气氛之中。





Armstrong Booth – Domotex Trade Fair, Hannover, Deutschland 阿姆斯壮展位 – Domotex 地板展, 汉诺威, 德国

Segment / 领域: Trade Fair / 展览会

Project by / 设计师: Uwe Schindler

Year / 年份: 2006 年

Product / 产品: Armstrong Vinyl, Linoleum /
阿姆斯壮 PVC 地板, 亚麻地板

Architect Uwe Schindler designed the booth for Armstrong 2006. On 80m² he carved out of a black cube a wave. Different materials were applied as strips along the floors, walls and ceilings.

The booth design was awarded with the ADAM design award and the cover page of the Design manual: International trade fair design 2006/2007.

建筑师 Uwe Schindler 设计了阿姆斯壮在 2006 年 Domotex 的展位。在 80 平米他雕刻了一个黑色波浪型立方体，不同的材料被做成条纹状贴上地板、墙壁和天花板。

这个展位的设计获得了 ADAM 设计大奖和设计指南封面：2006/2007 年国际展览会设计。



The background of the page is a photograph of the interior of Antelope Canyon, showing smooth, undulating sandstone walls with horizontal light and dark bands. A bright light source from above creates a strong glow and long shadows. A solid green circle is positioned in the center-left of the frame, serving as a backdrop for the text.

mpizeb

design

One of the great triumphs of the Twentieth Century is the capacity to design architectural spaces as units in which the smallest and largest parts coexist in a new harmonious balance. Micro and macro are integrated and constantly overlap in the context of a unified, refined approach to creation and construction.

Comparison Chart — Different Flooring Materials

不同类型地板性能对比

Floor Performance 地板性能	Linoleum 亚麻地板	Vinyl PVC 地板	Carpet 地毯	Wood 木地板	Laminate 强化地板	Stone 石材	Ceramic 地砖	Epoxy 环氧地坪
Color and Design 颜色与设计	★★★★★	★★★★★	★★★★★	★★★★	★★★	★★	★★★★	★
Anti-slip 防滑	★★★★★	★★★★★	★★★★★	★★★	★★★	★	★	★
Hygiene 清洁卫生	★★★★★	★★★★★	★	★★★★	★★★	★★★★	★★	★★
Safe and resilient 安全有弹性	★★★★★	★★★★★	★★★★★	★★★★	★★	★	★	★
Easy to clean 易清洁	★★★★★	★★★★★	★	★★★★	★★★	★★★★	★★★	★
Easy to maintain 易保养	★★★★★	★★★★★	★	★★★	★★★	★★★★	★★★★	★★★★
Comfort to feet 脚感舒适	★★★★★	★★★★★	★★★★★	★★★★	★★★	★	★	★
Quiet 安静	★★★★★	★★★★★	★★★★★	★★★	★	★★	★	★
Wear resistance 耐磨耐用	★★★★★	★★★★★	★	★	★★★	★★★★	★★★	★★
Water proof 防水	★★★★★	★★★★★	★	★	★	★★★	★★★	★★★★
Antimicrobial 抗菌	★★★★★	★★★★★	★	★★	★★★	★★★	★★★	★★★

★ Standard performance 标准性能
★★★★★ Best performance 最佳性能

Application 应用场所

Public 公共场所

- corridor
- hall
- stairway
- entrance area

- 走廊
- 门厅
- 楼梯
- 入口大堂

Commercial 商业

- corridor
- office
- entrance area
- stairway
- meeting room

- 走廊
- 办公室
- 入口大堂
- 楼梯
- 会议室

Factories 工厂

- production area
- stairway
- laboratory
- canteen

- 生产车间
- 楼梯
- 实验室
- 食堂

Healthcare 健康

- patient rooms
- operating room
- corridor
- wetroom
- restaurant area

- 诊疗室
- 手术室
- 走廊
- 潮湿环境区域
- 餐厅

Shopping Centres 购物中心

- selling area
- stock
- restaurant area
- stairway

- 销售区域
- 仓库
- 餐厅
- 楼梯

Education 教育

- classroom
- corridor
- gym area
- stairway
- wetroom

- 教室
- 走廊
- 健身房
- 楼梯
- 潮湿环境区域

阿姆斯特壮地材系统工程案例(部份)

健康环境：

项目名称	产品	地点	面积(平方米)
中山医院	中意龙 / 翠丽龙 / 宝石龙	上海	15,000
上海瑞金医院	龙彩 / 魔石彩 / Bravo	上海	16,000
上海东方医院一期/二期	龙彩	上海	45,000
北京人民医院	翠丽龙	北京	13,000
中山大学附属第一医院	龙彩	广州	20,000
康华医院	健丽龙、保健龙	东莞	40,000
浙江附属第一医院	保健龙	杭州	30,000
浙江大学附属第一医院	新意龙	杭州	10,000
天津卫生防病中心	保健龙	天津	7,000
旺旺医院	魅力龙 / 龙彩	长沙	36,000

教育环境：

项目名称	产品	地点	面积(平方米)
东软软件园	龙彩	全国	30,000
上海同济大学汽车学院	威牛	上海	16,000
复旦大学图书馆	翠丽龙	上海	7,000
上海交通大学工程信息学院	翠丽龙	上海	4,000
北京大学生物楼	新意龙	北京	12,000
北京体育大学国家训练基地	翠丽龙	北京	3,000
深圳大学城	翠丽龙II	深圳	20,000
浙江大学医学院药学院	宝石龙	杭州	7,000
天津大学	健丽龙	天津	3,000
哈尔滨工业大学科技园	翠丽龙II / 美莱亚麻	哈尔滨	12,000

办公环境：

项目名称	产品	地点	面积(平方米)
上海市政府办公大楼	美莱亚麻 / 魅力龙	上海	4,000
浦东新区政务办理中心	亚麻	上海	10,000
上海通用汽车(SGM)公司	龙彩	上海	5,000
嘉定震旦大楼	龙彩	上海	15,000
北京国家会计师培训中心	龙彩 / 亚麻	北京	17,000
中国专利局	洞石彩	北京	10,000
广东省公安厅	新意龙	广州	5,000
WAL-MART中国总部	美莱亚麻	深圳	20,000
摩托罗拉(天津)总部	龙彩	天津	16,000
大连国际会展中心	龙彩	大连	10,000
潍柴动力集团办公楼	CONTOUR	潍坊	10,000

轻工业环境：

项目名称	产品	地点	面积(平方米)
欧姆龙电子	龙彩	上海	8,000
飞利浦LCD有限公司	龙彩 / 防静电龙SDT	上海	13,200
上海摩托罗拉公司	龙彩	上海	3,000
索爱电子厂房	电子龙	北京	2,000
广州宝洁P&G	龙彩	广州	3,000
好易通科技有限公司	龙彩	深圳	19,800
厦门联想厂房	龙彩	厦门	10,000
UT斯达康研发中心	保健龙 / 电子龙	杭州	26,000
苏州3M工厂	新意龙	苏州	4,000
内蒙古蒙牛实验楼(世界乳品中心)	宝石龙 / 翠丽龙	呼和浩特	10,000

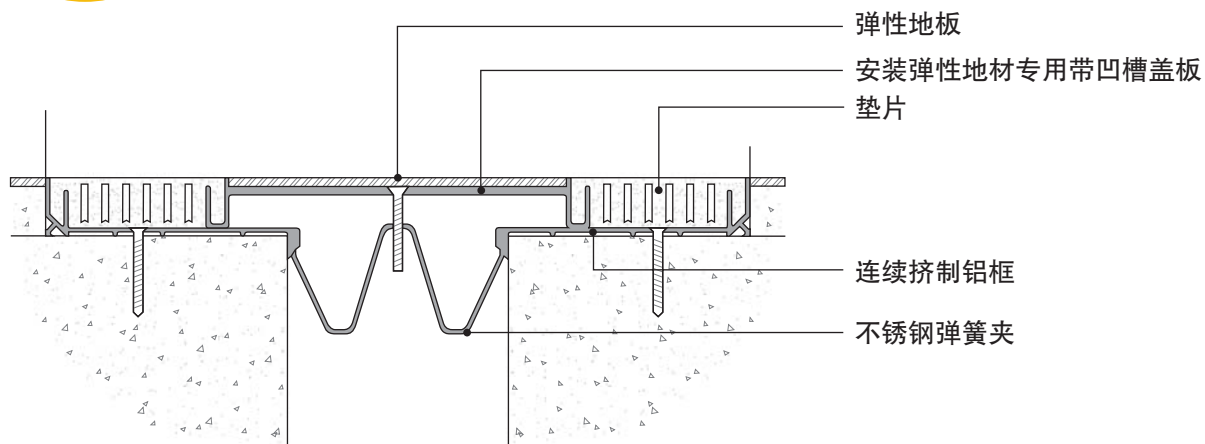
零售业及商业环境：

项目名称	产品	地点	面积(平方米)
易初莲花	龙彩	全国	120,000
锦江之星	龙彩	全国	80,000
大润发	龙彩	全国	35,000
世茂北外滩大酒店	魔石彩	上海	8,000
中国首都国际机场	亚麻	北京	20,000
北京展览馆	洞石彩	北京	5,500
沈阳百利家居广场	龙彩	沈阳	10,000
乌鲁木齐诺玛特超市	龙彩	乌鲁木齐	10,000
广州天河好又多超市	龙彩	广州	12,000
机场空港酒店	美莱亚麻	广州	3,000

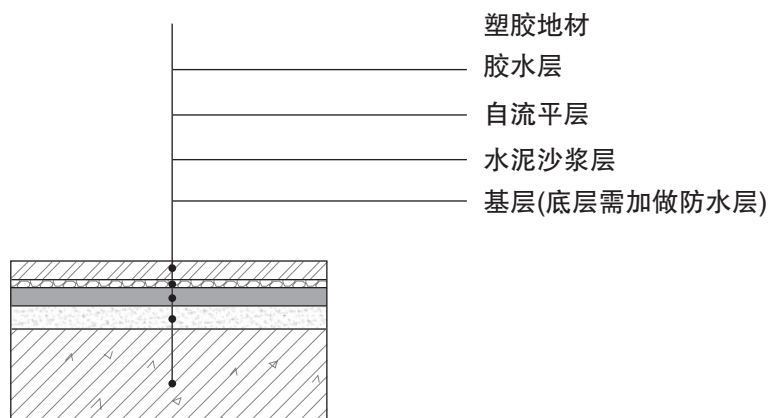
公共项目环境：

项目名称	产品	地点	面积(平方米)
苏州博物馆	美莱亚麻	苏州	2,500
重庆少年宫	龙彩	重庆	4,000
西昌卫星发射基地火箭发射2号塔	亚麻	成都	800
武汉市体育馆	宝石龙	武汉	1,000
合肥体育中心	健丽龙、坚利龙	合肥	7000
唐山抗震纪念馆	亚麻	唐山	2,500
松江科技馆	魅力龙	上海	1,000
松江档案馆	亚麻	上海	5,000

Profile 节点图

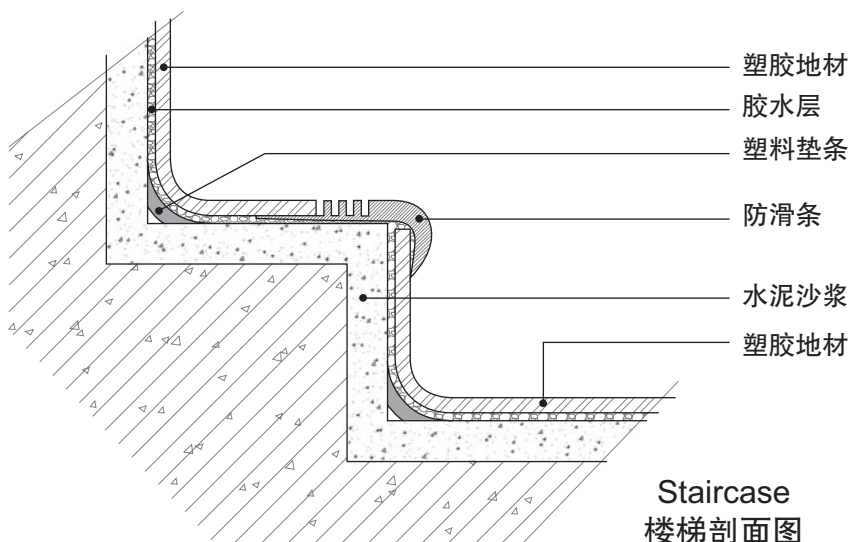


Seam Distortion
变形缝剖面图

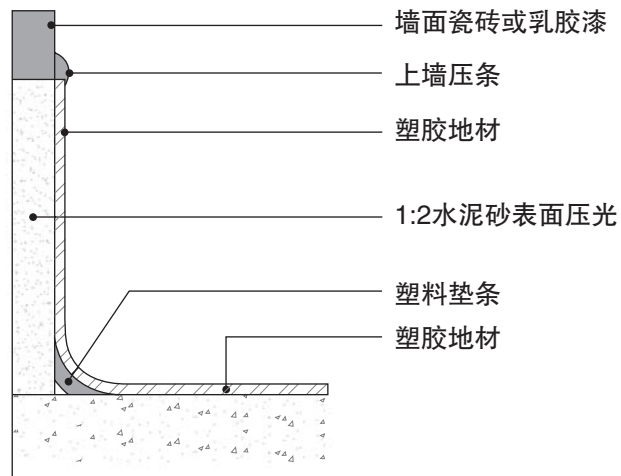


Subfloor
基层剖面图

注：自流平高度最低为2mm
水泥砂层高度最低为25mm



Staircase
楼梯剖面图



Flash Coving
上墙踢脚剖面图



阿 姆 斯 壯

idea | reality

Idea Reality Brochure (pdf) &
Profile 节点图 CAD 及 JPG 格式文件

<p>地 材 COMMERCIAL</p>	<p>[Between us, ideas become reality.™] 你 我 共 创 理 想 天 地</p>
<p>系 列 FLOORING</p>	

www.armstrong-asia.com
www.armstrong.cn



阿 姆 斯 壯

Armstrong World Industries Offices 阿姆斯壮亚洲区各联络处

		Tel 电话	Fax 传真
CHINA – BEIJING	中国 – 北京	(86-10) 6517 1061	(86-10) 6510 2821
CHINA – GUANGZHOU	中国 – 广州	(86-20) 8375 3862	(86-20) 8375 3861
CHINA – SHANGHAI	中国 – 上海	(86-21) 6391 3366	(86-21) 6391 2021
HONG KONG	香港	(852) 2585 7800	(852) 2598 7181/7113
JAPAN	日本	(81-4) 5450 7185	(81-4) 5450 7186
SINGAPORE	新加坡	(65) 6358 1082	(65) 6358 1084
KOREA, Sales Agent	韩国	(82-2) 555 1972	(82-2) 544 1911
TAIWAN	台湾	(886-2) 2786 7258	(886-2) 2786 4082